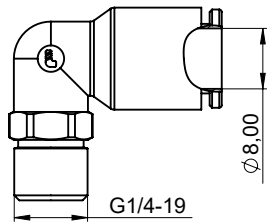
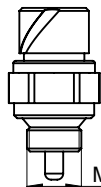
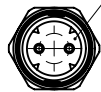


Symbol 3;  
Air input connector



Symbol 6;  
Sensor  
ISO 15170-1



M18x1,5



NC

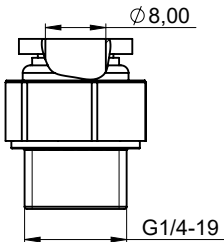
General table

Weight	Body Mat.	Air Pressure
28 Kg	GGG-50 (NCI)	6-8 Bar

Part no/Ratio/Color Table

1(1st Output)	2 (2rd Output)	Kozmaksan Part no	Ford Otosan Part no	Body Color
1/1.25	1/1	OTS.IHT.6.1.25.2C.2.F	RC46 7L486 AA	Black (RAL 9005)
1/1.45	1/1	OTS.IHT.6.1.45.2C.2.F	RC46 7L486 BA	Grey (RAL 7001)

Symbol 5;  
Air input connector



Protection ; IP67 ISO 20653 / IP69K  
Shock ; 50 g / 6 msec  
Vibration ; 5 g / 100 – 1000 Hz  
Mechanical life ; up to 4 mio. cycles  
Voltage Range ; 9 VDC – 32 VDC  
Continuous current ; 10 mA – 16 A

Symbol Instructions

1	1st Output (proportional) , Flange (DIN 100)
2	2rd Output (unproportional) , 4bolt pump connection (ISO 7653 pad / ISO 14 - DIN 5462 spline)
3	Air Input (1st Output Engage)
4	Sensor Engage-Disengage (1st Output )
5	Air Input (2rd Output Engage)
6	Sensor Engage-Disengage (2rd Output )